

WJK clamp information(welded type)

(1) Base of WJK clamp is welded to the rail beam support with two sides or three sides.

(2) WJK clamp base and T bolts are spherical hinge connection. The clamp can relieve the impact on rails, crane beams, brake systems, which extend the longevity of crane systems.

(3) WJK clamp with a adjustable wedge plate, with dual self-lock tightening mechanism, prevent loose in application.

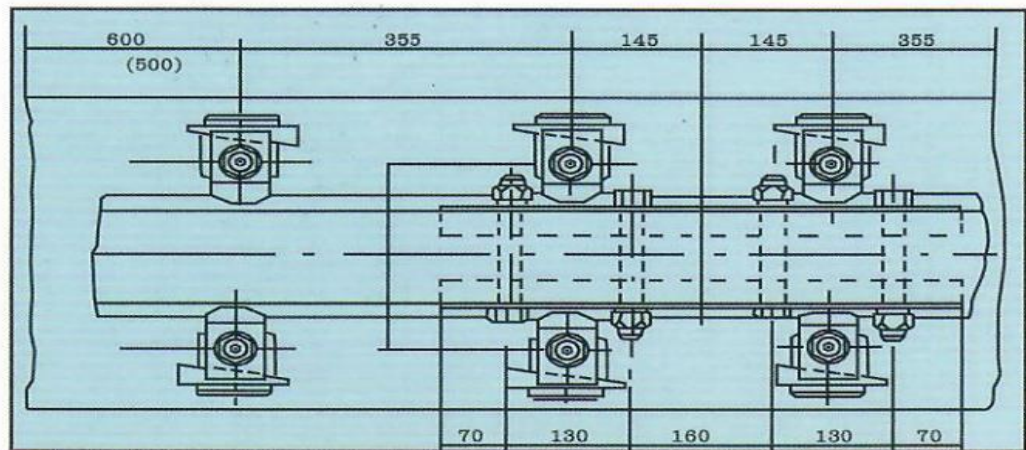
(4) T Bolt and upper plate of WJK rail clamp are easily disassemble and assemble, which is convenient for installation and maintenance.

(5) Upper plate of WJK clamp well fit rail section curvature.

(6) WJK clamp installation space depend on different crane

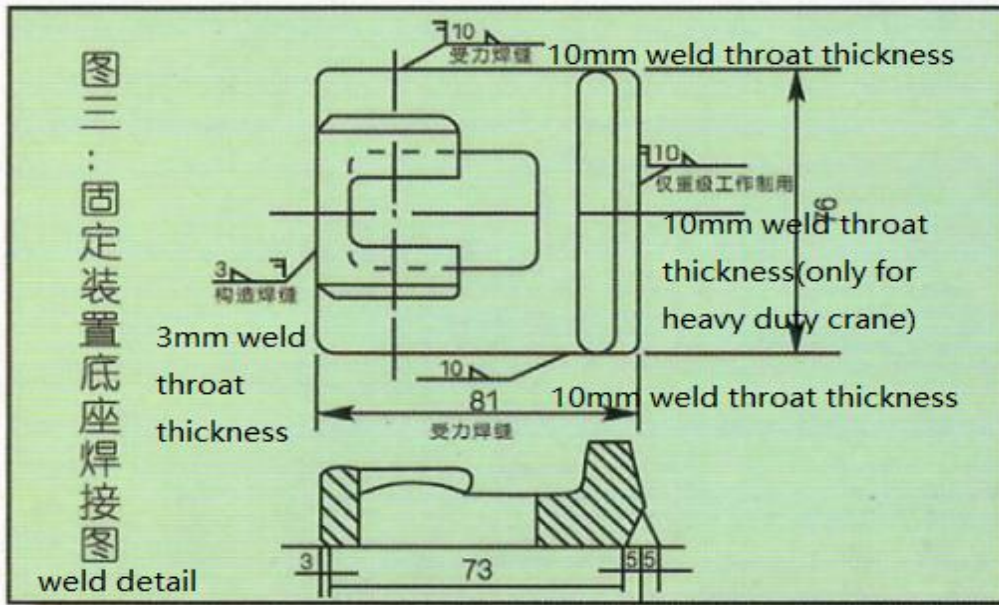
$Q \leq 275t$, 600mm space

$Q > 275t$, 500mm space



(7) Rail clamp base is made of weldable grade steel Q345, using low hydrogen electrodes. Recommended electrodes E4315, E5015.

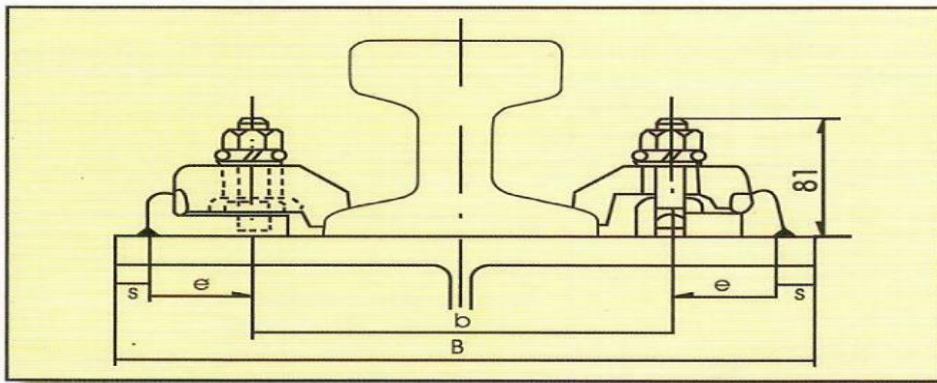
(8) Two side welding should be used for A4-A5 middle duty crane. Three side welding should be used for A6-A7 (A8) heavy duty crane.



(9) Tightening torque $Q \leq 275t(150N.m)$

Tightening torque 220N.m for heavy duty crane.

(10) Max. side load: 45KN



model 型号	尺寸 size	b (mm)	2e (mm)	2S (mm)	B (mm)
			E=62	S=10 (5)	B=b+2e+2s
WJK-TG38		194	124	20 (10)	338 (328)
WJK-TG43		194			338 (328)
WJK-TG50		212			356 (346)
WJK-TG60		230			374 (364)
WJK-QU70		200			344 (334)
WJK-QU80		210			354 (344)
WJK-QU100		230			374 (364)
WJK-QU120		250			394 (384)



ITEM: WELDED TYPE RAIL CLAMP

MODEL: WJK-TG

STANDARD: JB/T10543-2006

MATERAILS: Q345

WEIGHT: 2KG PER SET

(INCLUDING UPPER PLATE, BASE 81*76mm, ADJUSTABLE WEDGE PLATE, BOLT, NUT, FLAT WASHER, SPRING WASHER)